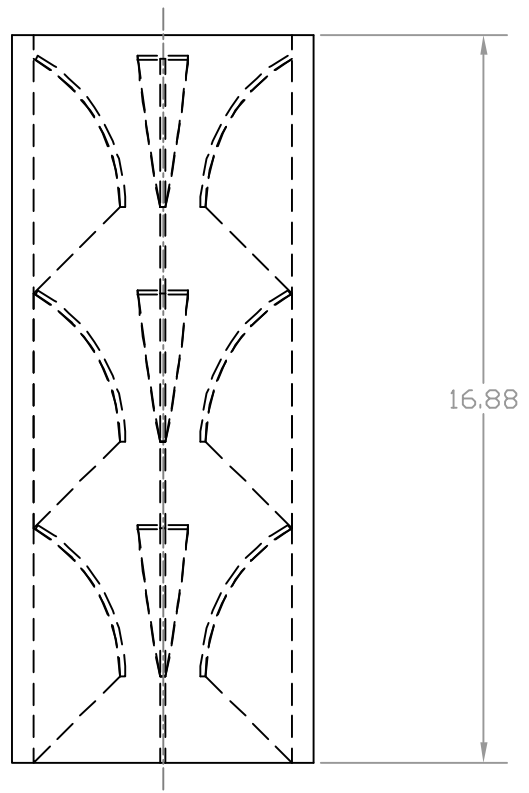
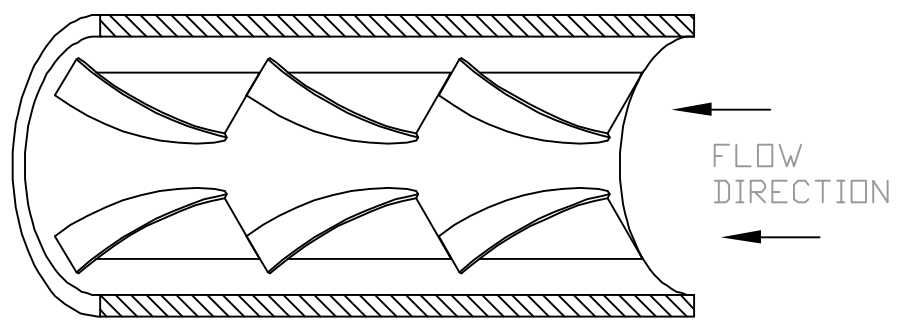
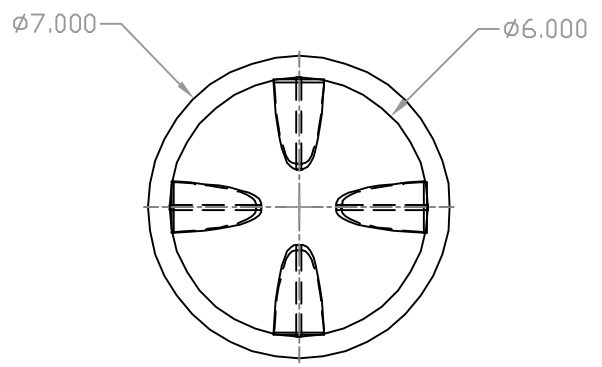


WESTFALL 3050 Staged Mixer

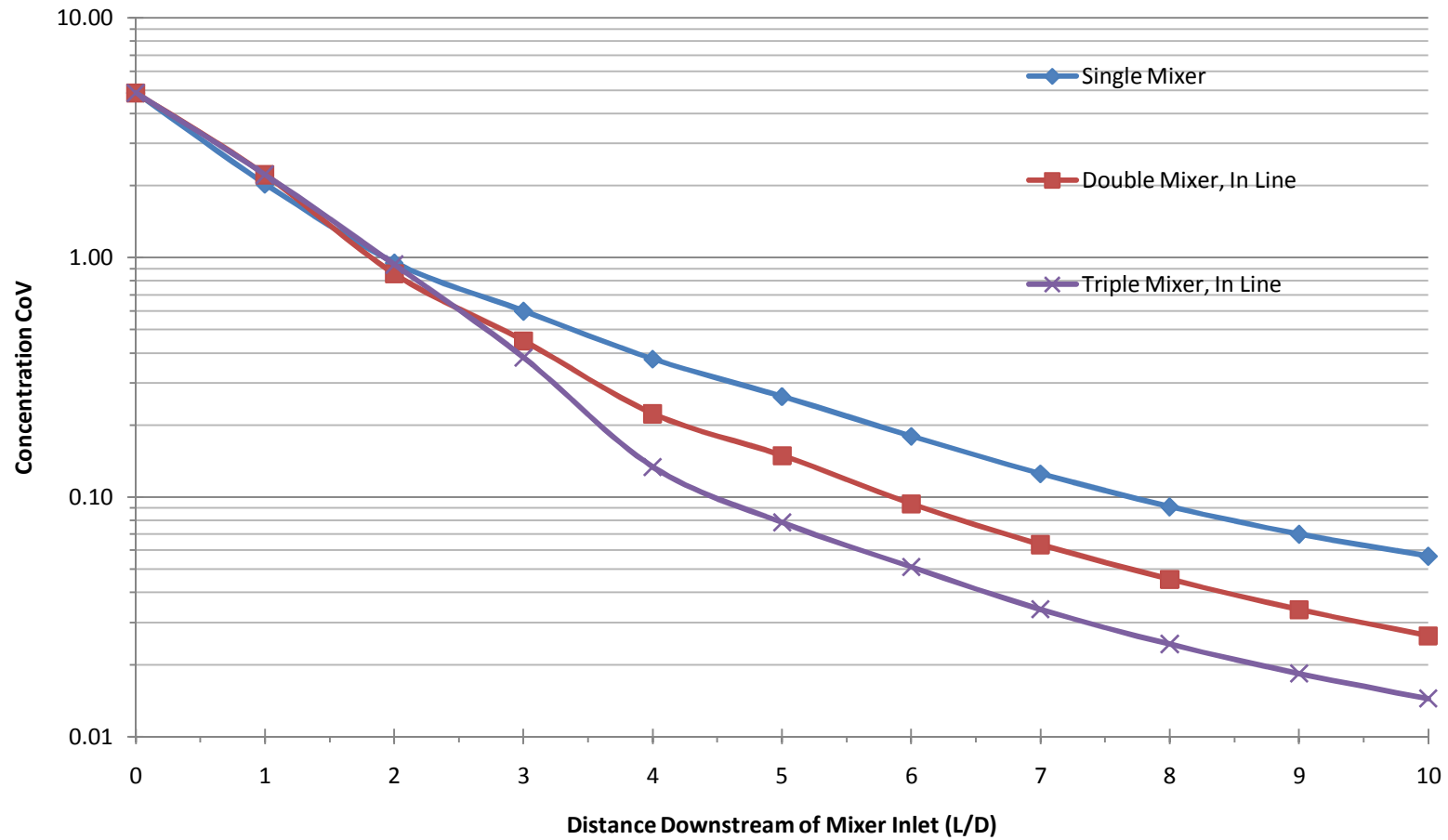


PATENT PENDING

REV	DATE	BY	APP'D	DESCRIPTION
1				Initial Design
2				Revised Design
3				Final Design

WESTFALL
Blube Assy
12/21/19

Westfall 3050 Staged Mixer CFD Results



Diameter (in) = 6
 Inlet Flow Rate (gpm) = 360
 Injection Flow Rate (gpm) = 7.2
 Velocity (ft/s) = 4.17

1b, single mixer

dP (iwg) 3.18
 k-value = 0.92

2a, mixers in line

dP (iwg) 5.07
 k-value = 1.47

3a, mixers in line

dP (iwg) 6.84
 k-value = 1.98

Diameters

		sd	cov
0	i.00	0.095477	4.871
1	i.01	0.03973	2.027
2	i.02	0.018667	0.952
3	i.03	0.01172	0.598
4	i.04	0.007389	0.377
5	i.05	0.005156	0.263
6	i.06	0.00352	0.180
7	i.07	0.002456	0.125
8	i.08	0.001788	0.091
9	i.09	0.001373	0.070
10	bc.outlet	0.001112	0.057

sd cov

		sd	cov
i.00	0.095472	4.871	
i.01	0.043453	2.217	
i.02	0.016738	0.854	
i.03	0.008807	0.449	
i.04	0.004366	0.223	
i.05	0.002923	0.149	
i.06	0.001835	0.094	
i.07	0.001241	0.063	
i.08	0.000889	0.045	
i.09	0.000664	0.034	
bc.outlet	0.000517	0.026	

sd cov

		sd	cov
i.00	0.095467	4.871	
i.01	0.043454	2.217	
i.02	0.018319	0.935	
i.03	0.007493	0.382	
i.04	0.002622	0.134	
i.05	0.001537	0.078	
i.06	0.001002	0.051	
i.07	0.000667	0.034	
i.08	0.000478	0.024	
i.09	0.00036	0.018	
bc.outlet	0.000283	0.014	